



E-ISSN: 2707-4455  
P-ISSN: 2707-4447  
IJFM 2024; 6(1): 01-09  
[www.forensicpaper.com](http://www.forensicpaper.com)  
Received: 02-11-2023  
Accepted: 13-12-2023

**Marwa Ahmed Mubarak**  
Assistant Lecturer, Forensic  
Medicine and Clinical  
Toxicology, Faculty of  
Medicine, Tanta University,  
Egypt

**Doaa Mohamed El-Gharbawy**  
Assistant Professor, Clinical  
Toxicology, Faculty of  
Medicine, Tanta University,  
Egypt

**Ayman Abd El Fatah Wagih**  
Professor, Biochemistry,  
Faculty of Medicine, Tanta  
University, Egypt

**Aisha Ibrahim Maklad**  
Professor, Forensic Medicine  
and Clinical Toxicology,  
Faculty of Medicine, Tanta  
University, Egypt

**Corresponding Author:**  
**Marwa Ahmed Mubarak**  
Assistant Lecturer, Forensic  
Medicine and Clinical  
Toxicology, Faculty of  
Medicine, Tanta University,  
Egypt

## Assessment of sTWEAK protein, neutrophil-lymphocyte ratio, blood lactate and carboxyhemoglobin as predictors of delayed neurological sequelae after acute carbon monoxide poisoning

**Marwa Ahmed Mubarak, Doaa Mohamed El-Gharbawy, Ayman Abd El Fatah Wagih and Aisha Ibrahim Maklad**

DOI: <https://doi.org/10.33545/27074447.2024.v6.i1a.68>

### Abstract

Carbon monoxide (CO) poisoning exhibits a substantial importance as a toxicological reason for both morbidity as well as mortality worldwide. There is a strong demand for factors predicting delayed neurological sequelae (DNS) following acute CO poisoning. This study aimed to evaluate soluble tumor necrosis factor-like weak inducer of apoptosis (sTWEAK) protein, neutrophil-lymphocyte ratio (NLR), blood lactate level and carboxyhemoglobin (COHb) level as predictors for DNS following acute CO poisoning. This prospective cohort study involved fifty individuals having acute CO poisoning admitted to Tanta University Poison Control Center in Egypt throughout a timeframe between the 1<sup>st</sup> of September 2020 till the end of August 2021. While being admitted, all participants went through a comprehensive medical history, clinical findings, as well as routine laboratory testing. NLR was calculated, in addition to measuring sTWEAK, lactate, and COHb levels. Follow-up of these cases was done up to 40 days from acute exposure to CO to detect DNS manifestations. The results of this study reported elevation in all the studied markers (NLR, lactate, sTWEAK, and COHb). High significant associations were reported between DNS and both hyperlactatemia, elevated NLR, and high COHb level. ROC curve analysis for predicting DNS in acute CO poisoning exhibited, COHb level had the best area under the curve (AUC= 0.926) followed by NLR (AUC=0.903) then lactate (AUC=0.884). It could be concluded that; lactate, COHb and NLR were beneficial biomarkers to predict DNS among cases having acute CO poisoning, while sTWEAK level didn't show a significant association with DNS.

**Keywords:** Carbon monoxide poisoning, predictors, sTWEAK, NLR, lactate, COHb

### Introduction

Carbon monoxide (CO) is often referred to as “the silent killer” since it exhibits tasteless, colorless, odorless as well as non-irritating characteristics. Additionally, its poisoning has no specific symptomatology. CO represents an air pollutant generated when carbonaceous fuels are not completely burned. CO typical sources involve motor vehicles, water heaters, generators, boilers, fireplaces, stoves, and ovens. The improper ventilation of gas appliances and faulty heating systems are the major cause of CO poisoning (Sikary *et al.* 2017) [30].

Carbon monoxide poisoning remains a serious international public health problem, representing a major contributor for poisoning-related deaths globally. The toxic effect of CO is mainly due to tissue hypoxia by forming carboxyhemoglobin. CO forms a stronger bond with hemoglobin as opposed to oxygen, possessing a binding affinity of 200 times greater, which results in shifting O<sub>2</sub>-Hb curve to the left and preventing oxygen release from other binding sites of Hb to tissue (Gozubuyuk *et al.* 2017) [10].

Diagnosis of CO poisoning could be missed due to its non-specific clinical picture including headache, dizziness, seizures, coma, vomiting, dyspnea, and chest pain; therefore, physicians should take an accurate history and suspect this diagnosis among the differential diagnosis of patients who have an unknown cause of headache and/ or altered mental status (Velasquez *et al.* 2017) [31]. In addition, outcome of CO poisoning is highly unpredictable, cases should be

followed up to 40 days after acute exposure to CO for possible development of neuropsychiatric sequelae. Previous studies suggested some biochemical markers, involving neuron-specific enolase, interleukin-6, S100B protein, copeptin, pentraxin, as well as myelin basic protein could be utilized for predicting DNS occurrence among acute CO-poisoned cases. However, there is not any biochemical marker exhibiting a reliable predictor for DNS following acute CO poisoning (Kim *et al.* 2018; Hanley and Patel 2023) <sup>[19, 13]</sup>.

Dindar Badem *et al.* (2019) <sup>[5]</sup> found that sTWEAK protein was a major apoptosis indicator among CO-poisoned cases and they recommended doing more research for determining its predicting impact on CO poisoning prognosis. Furthermore, NLR represents a largely utilized marker for systemic inflammation that is suggested to exhibit an impact on the CO poisoning-related complications; therefore, high NLR may reflect the occurrence of complications in CO-poisoned patients (Karabacak *et al.* 2015) <sup>[18]</sup>. Additionally, lactate is a necessary marker of tissue hypoxia, and it was reported that blood lactate level may predict the neurological outcome in CO-poisoned patients (Jung and Lee 2019) <sup>[16]</sup>. Moreover, the ability of COHb level to be a predictor for DNS in CO poisoned cases is still controversial, Chi *et al.* (2022) <sup>[4]</sup> stated that it has a poor ability to predict DNS in these cases, while Hassan *et al.* (2018) <sup>[14]</sup> as well as Pan *et al.* (2019) <sup>[25]</sup> founded that COHb level might be a predictor for DNS occurrence following acute exposure to CO.

Determination of accurate predictors for the prognosis of CO poisoning is highly required; therefore, this study aimed to assess sTWEAK protein, NLR, blood lactate level, and COHb as predictors of DNS following acute CO poisoning.

### Patient and Methods

This prospective cohort study involved fifty Egyptian individuals of both males and females, whose ages were eighteen years or older with acute CO poisoning admitted to Tanta University Poison Control Center (TUPCC), Emergency Hospital, Tanta, Egypt within 24 hours of CO exposure during the period from the 1<sup>st</sup> of September 2020 to the end of August 2021. The included patients within this research were divided into two groups: DNS group which included those developing delayed neurological, psychiatric, or cognitive dysfunction after acute CO poisoning, and non-DNS group involving those without such sequelae. In addition, a control group of 25 healthy volunteers matched in age and sex with the patients was used to compare the level of sTWEAK. Acute CO-poisoned cases were diagnosed according to CO acute exposure history, clinical findings (involving headache, abnormal mental status, seizures, chest pain, dyspnea, along with palpitation), as well as elevated carboxyhemoglobin (COHb) level > 3% in non-smokers. Diagnosis of DNS was based on the development of any new neuropsychiatric manifestations such as recurrent headache, dysarthria, dysphagia, apraxia, cognitive dysfunction, parkinsonism, gait abnormalities, memory disturbances, impaired concentration, motor deficits, seizures, psychosis, and mood disorders during a 6-weeks period following acute exposure to CO (Kokulu *et al.* 2020) <sup>[20]</sup>.

Exclusion criteria included co-ingestion or co-exposure to other toxins, patients who received treatment before admission or refused to sign the informed consent, factors

that may be associated with alteration in the levels of the studied markers such as diabetes mellitus, chronic renal disease, MI, CHF, COPD, CLD, malignancy, autoimmune disease, morbid obesity, acute or chronic inflammatory disease, COVID 19, neuropsychiatric disorders, smoking, addiction, and receiving chemotherapy.

This research commenced following the Medical Research Ethics Committee of the Faculty of Medicine, Tanta University's approval (Approval code was 34038/8/20). All participants or their guardians were asked to fill an informed consent prior to commencing our research. Data confidentiality was protected through a unique code assigned to every participant.

For each patient in this study, recording these data was accomplished; socio-demographic information involving (Age, sex, occupation, and residence), toxicological history (Circumstances, place, source, and duration of CO exposure as well as pre-hospitalization period), and presenting symptoms.

Clinical examination including vital signs in addition to respiratory, neurological as well as cardiovascular assessment were documented while being admitted to the hospital. Furthermore, an electrocardiogram (ECG) was done for all patients on admission and any abnormalities were recorded.

Obtaining blood samples was accomplished upon immediate admission utilizing strict sterile methods as well as providing any treatments. Collecting arterial blood samples was also done for arterial blood gas's analysis. Additionally, venous blood samples were collected for analysis of COHb, blood lactate, as well as complete blood count in addition to sTWEAK that was measured in serum after being separated by centrifuge. Estimation of sTWEAK was performed according to the manufacturer's pamphlet on sTWEAK using ELISA Kit (Catalog No. E1820Hu). It was supplied by SHANGHAI KORAIN BIOTECH Company (Shanghai Korain Biotech Co., Ltd. 2021) <sup>[29]</sup>.

Blood lactate level was measured photometrically by Konelab™ Prime60i (Thermo Fisher Scientific, Finland) device (Brunner *et al.* 2021) <sup>[2]</sup>. The normal reference range of blood lactate level is less than 18 mg/dl (Patki *et al.* 2017) <sup>[26]</sup>.

NLR was measured through dividing neutrophils' absolute value by lymphocytes' absolute value. The normal reference ranges for neutrophils, lymphocytes, and NLR are 1.8-7.3 x10<sup>3</sup>/ul, 1.5-4 x10<sup>3</sup>/ul, and 1-2 respectively (Zahorec 2021) <sup>[32]</sup>.

Carboxyhemoglobin level was measured by gas analyzer radiometer, representing an automated spectrophotometric analyzer, which is operated based on manufacturer's specification (Haemoximetry Qualicheck TM ©Radiometer A/S, Emdrupvej 72, Copenhagen NV, Denmark) (Ghanem *et al.* 2012) <sup>[8]</sup>. Normal value of COHb is <3% in non-smokers (Hanley & Patel 2022) <sup>[13]</sup>

Follow-up of all cases was done up to 40 days after acute CO poisoning to detect any development of DNS manifestations. A neuropsychiatrist confirmed DNS diagnosis via meticulous assessments as well as neuropsychiatric testing (Kokulu *et al.* 2020) <sup>[20]</sup>.

### Statistical analysis

The data went through a statistical analysis utilizing SPSS software statistical computer package for Windows, version 25 (IBM Corp., Armonk, N.Y., USA). Utilizing

ShapiroWilk test for normality was accomplished for the distribution of numerical data. Quantitative data were displayed by median, interquartile range (25<sup>th</sup>-75<sup>th</sup> percentiles), as well as range. Qualitative data were displayed by number as well as percent. The findings were tabulated, grouped, then went through a statistical analysis utilizing these tests: Mann Whitney U test (U) while comparing among two independent groups regarding nonparametric quantitative variables, Pearson chi-square test ( $\chi^2$ ) to detect whether there was a significant association between different categorical variables. Additionally, if it was inappropriate, it was replaced by Fischer exact or Monte Carlo exact test for comparison among more than 2 independent groups regarding non-parametric quantitative variables. Additionally, the receiver operating characteristic (ROC) curve was used for sensitivity and specificity. The AUC was classified into excellent, 0.9-1; good, 0.8-0.9; fair, 0.7-0.8; poor, 0.6-0.7; and fail, 0.5-0.6. A P value  $\leq 0.05$  is deemed to be significant.

## Results

At the study's timeframe, seventy acute CO-poisoned cases underwent admission to the TUPCC. Among these, 50 participants matched our inclusion criteria and were included in our research. The studied CO-poisoned cases' demographic data were shown on Table 1. The median age of the patients exhibited 24.5 y, and male to female ratio exhibited 1:1. All participants went through exposure to CO accidentally and the median duration of exposure to CO was 30 minutes, while the median delay time was 2 hours. Gas heaters represented the most prevalent source of CO poisoning (62%) followed by charcoal burning (24%). Additionally, the most common neurological, gastrointestinal, and chest complaints in the studied patients were loss of consciousness (70%), vomiting (52%), and dyspnea (18%) respectively.

Concerning clinical examination, the medians of the vital signs showed no abnormalities. Neurological examination of the studied patients on admission showed that the median of GCS was 15. The GCS associated with most studied patients ranged from 13-15 (88%) while 8% of patients had GCS ranged from 3 to 8 and 4% were from 9 to 12. Chest auscultation revealed that 6% of patients had bilateral chest crepitations and 2% of patients suffered from diminished air entry. Cardiac examination revealed tachycardia in 42% of patients (Table 2).

The main ECG abnormality was sinus tachycardia (34%). Other ECG findings such as irregular pulse, sinus bradycardia, inverted p wave, ST depression, and premature ventricular contraction were also recorded. Concerning laboratory investigations, the results of ABG revealed that the medians of pH and PO<sub>2</sub> were within normal range, while the medians of PCO<sub>2</sub> and HCO<sub>3</sub> were 30.5 mmHg and 20.5 mEq/L respectively (Table 2). CBC analysis showed that the mean of Hb and the medians of platelets, white blood cells, and lymphocytes were within normal range, while the mean of neutrophils was high ( $8.0 \pm 3.59 \times 10^3 / \mu\text{L}$ ).

The current study recorded elevation in all the studied markers; the median of NLR was 4.1, while the medians of lactate and COHb levels were 27.5 mg/dl and 25% respectively. In addition, the median of sTWEAK level was 174.35 pg/ml (Table 2) which was higher than the median of sTWEAK level in healthy individuals (75 pg/ml).

Additionally, such a variation exhibited a statistical significance ( $p < 0.001$ ).

Regarding studied cases, follow up detected DNS occurrence among 16% of them. DNS were presented as chronic headache (10%), diminished hearing (2%), dizziness and vertigo (4%), gait disturbance (2%), memory disturbance (8%), slurred speech (2%), and vegetative state (4%) as illustrated in Fig.1.

The present study didn't detect a significant variation among the DNS group as well as the non-DNS one as regards socio-demographic data, while significant variations were documented among both groups regarding duration of exposure to CO ( $p = 0.034$ ) and delay time ( $p < 0.001$ ). Furthermore, neurological manifestations such as coma were significantly greater within the DNS group as opposed to the non-DNS one ( $p = 0.044$ ) (Table 1). Cases developing DNS had significantly lower GCS, systolic, and diastolic blood pressure on admission as opposed to those without DNS ( $p = 0.002, 0.017, \text{ and } 0.024$  respectively).

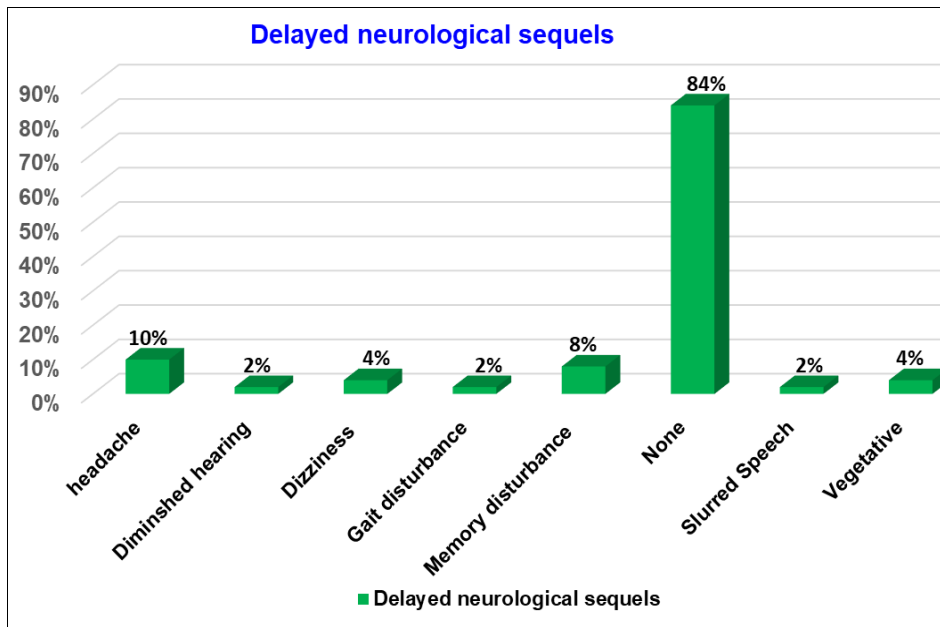
Additionally, the presence of bilateral chest crepitations or diminished air entry was significantly greater within the DNS group as opposed to the non-DNS one ( $p = 0.003$ ) (Table 2).

Regarding the studied markers, the current study showed a significant COHb level rise regarding the DNS group as opposed to the non-DNS one ( $p < 0.001$ ). In addition, there were significant hyperlactatemia and elevated NLR within DNS group as opposed to non-DNS one ( $p < 0.001$  for each), while no significant variation was found among both groups as well as sTWEAK level (Table 2).

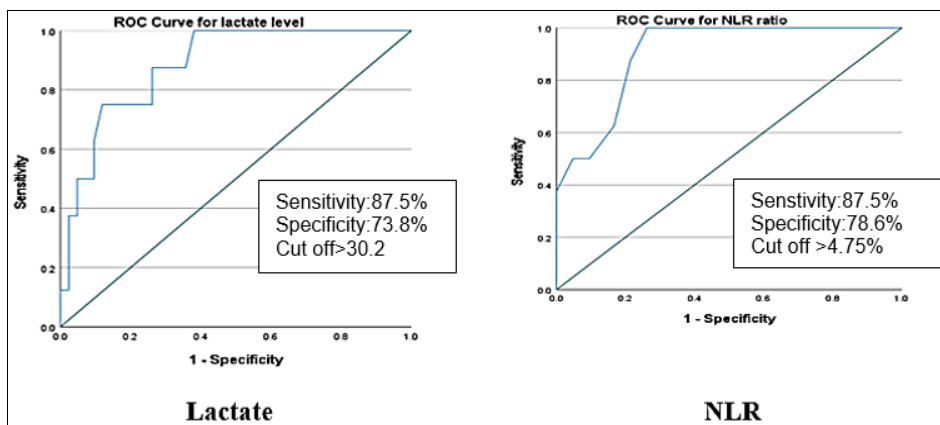
ROC curves analysis of some parameters as predictors of DNS including duration of exposure to CO, delay time, GCS, systolic blood pressure, diastolic blood pressure, COHb level, NLR, and lactate level showed that all of them were statistically significant except GCS. Moreover, COHb level had the best area under the curve (AUC = 0.926) followed by NLR (AUC = 0.903) and then lactate level (AUC = 0.884). Hence, ROC curve illustrated that NLR and COHb level were excellent predictors for DNS. Blood lactate level and pre-hospitalization period were good predictors for DNS, while duration of exposure to CO, systolic blood pressure, as well as diastolic blood pressure exhibited fair DNS predictions among acute CO-poisoned cases (Table 3).

Regarding NLR, it exhibited a sensitivity of 87.5% (was able to identify DNS in 87.5% of cases) while a specificity of 78.6% at a cut-off value  $> 4.75$  with an accuracy of 80%, while lactate level exhibited a sensitivity of 87.5% (was able to identify DNS in 87.5% of cases of acute CO poisoning) and a specificity of 73.8% at a cut-off value  $> 30.2$  mg/dl with an accuracy of 76% (Fig.2). Concerning COHb level, it had a sensitivity of 87.5% (was able to DNS in 87.5% of cases) and a specificity of 90.5% at a cut-off value  $> 36\%$  with an accuracy of 90% (Fig.3). The positive predictive values (PPV) of NLR, lactate, and COHb were 43.8%, 38.9%, and 63.6% respectively, while the negative predictive values (NPV) of the former markers were 97.1%, 96.9%, and 97.4% respectively (Table 3).

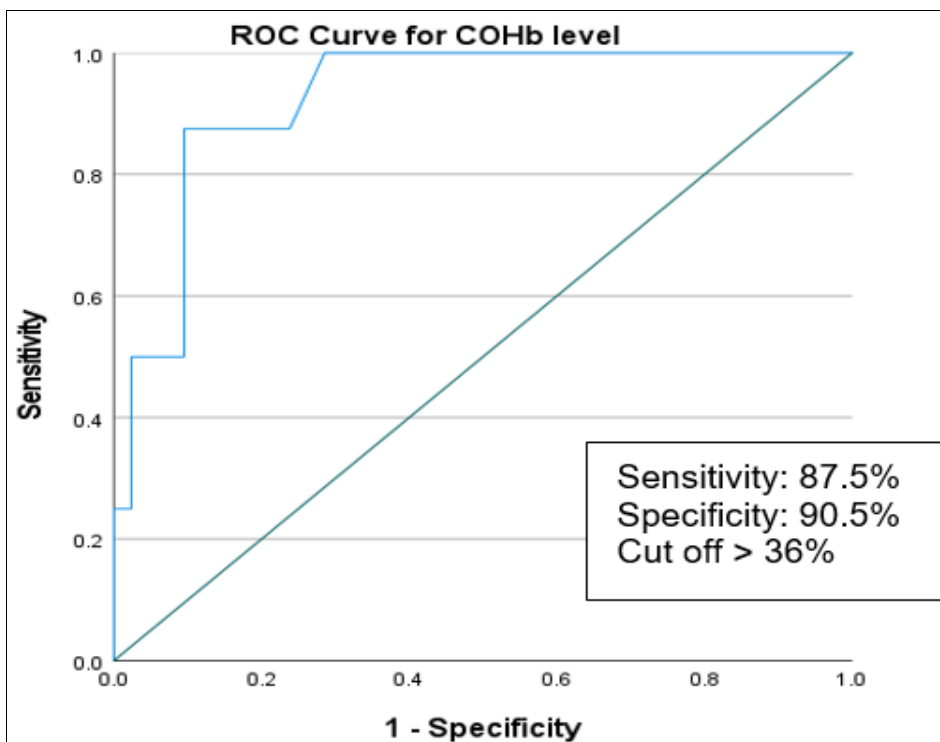
The sensitivity, specificity, accuracy, PPV, as well as NPV of systolic blood pressure, diastolic blood pressure, prehospitalization period, along with CO exposure duration were demonstrated in Table 3 and Fig. 4 and 5.



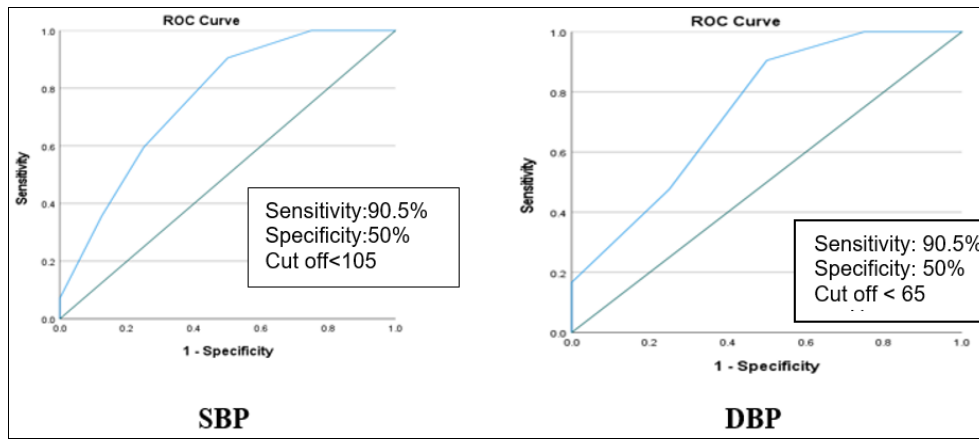
**Fig 1:** Delayed neurological sequels of the studied patients (N=50) with acute carbon monoxide poisoning



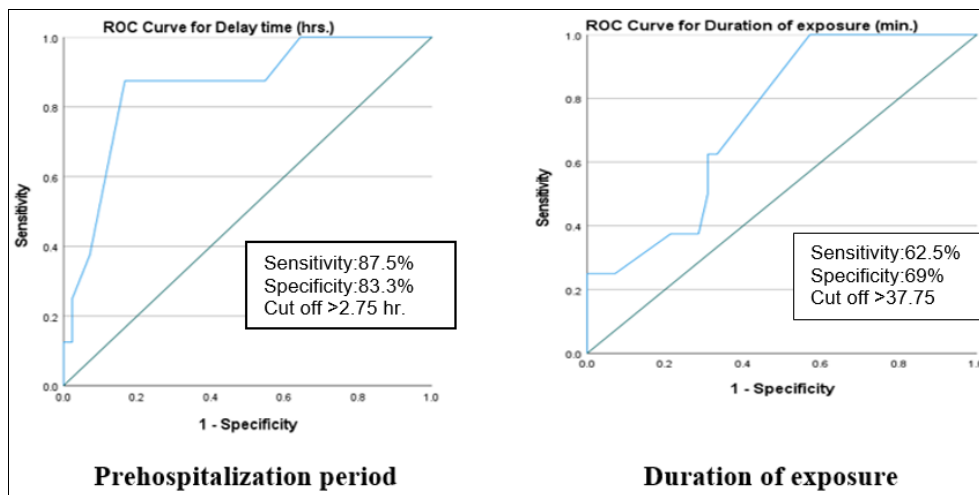
**Fig 2:** ROC curves for lactate and NLR for prediction of DNS after acute CO poisoning



**Fig 3:** ROC curves for COHb level for prediction of DNS after acute CO poisoning



**Fig 4:** ROC curves for systolic blood pressure (SBP) and diastolic blood pressure (DBP) for prediction of DNS after acute CO poisoning



**Fig 5:** ROC curves for prehospitalization period and duration of exposure for prediction of DNS after acute CO poisoning

**Table 1:** Comparison between DNS and non-DNS groups regarding sociodemographic data, toxicological history, and presenting symptoms of the studied CO-poisoned patients (N=50)

Variables		Total (N=50)	Non-DNS group (N=42)	DNS group (N=8)	Test of significance	P
Age (Years)	Median (IQR) Range	24.5 (20 – 35) 18 – 50	23.5 (20.0 – 35.0) 18 – 50	28.0 (20.25-33.75) 19-40	154.5 <sup>a</sup>	0.720
<b>Sex</b>						
Male	N (%)	25 (50.0%)	21 (50.0%)	4 (50.0%)	b	1.000
Female	N (%)	25(25.0%)	21 (50.0%)	4 (50.0%)		
Duration of exposure (minute)	Median (IQR) Range	30 (23.75-75)15 - 720	30.0 (20.0 – 60.0) 15 - 360	42.5 (30.0 – 345.0) 30 - 720	88.5 <sup>a</sup>	0.034*
<b>Source of exposure</b>						
Charcoal burning	N (%)	12 (24.0%)	9 (21.4%)	3 (37.5%)	c	0.549
Fire in a closed house	N (%)	6(12.0%)	6 (14.3%)	0 (0.0%)		
Gas heater	N (%)	31 (62.0%)	26 (61.9%)	5 (62.5%)		
Oven	N (%)	1 (2%)	1 (2.4%)	0 (0.0%)		
Delay time (Hour)	Median (IQR) Range	2 (1 – 3) 0.5 - 12	2.0 (1.0 – 2.0) 0.5 - 9	3.0 (3 – 5.5) 1.5 - 12	48a	<0.001*
<b>Neurological manifestations</b>						
Dizziness	N (%)	8 (16.0%)	8 (19%)	0 (0%)	c	0.044*
Drowsiness	N (%)	7 (14.0%)	5 (11.9%)	2 (25%)		
Loss of consciousness	N (%)	25 (50.0%)	23(54.8%)	2 (25.0%)		
Loss of consciousness and convulsion	N (%)	7 (14.0%)	4 (9.5%)	3 (37.5%)		
Loss of consciousness and headache	N (%)	3 (6.0%)	2 (4.8%)	1 (12.5%)		
<b>GIT symptoms</b>						
Nausea	N (%)	1 (2.0%)	1 (2.4%)	0 (0.0%)	c	0.751
None	N (%)	23 (46.0%)	20 (47.6%)	3 (37.5%)		
Vomiting	N (%)	26 (52.0%)	21 (50.0%)	5 (62.5%)		
<b>Chest symptoms</b>						
None	N (%)	41 (82.0%)	34 (81.0%)	7 (87.5%)	b	1.000
Dyspnea	N (%)	9 (18.0%)	8 (19.0%)	1 (12.5%)		

DNS: delayed neurological sequelae; N: number; IQR: interquartile range; a: Mann Whitney U test; b: FE: Fischer Exact test; C: Monte Carlo Exact test. \*: significant at  $p < 0.05$ ; GIT: gastrointestinal tract

**Table 2:** Comparison between DNS and non-DNS groups regarding clinical examination and laboratory investigations of the studied patients with acute CO poisoning (N=50)

Variables		Total (N=50)	Non-DNS group (N=42)	DNS group (N=8)	Test of significance	P
<b>GCS</b>	Median (IQR) Range	15 (15 – 15) 5 – 15	15.0 (15.0 – 15.0) 6 - 15	12.0 (6.25 – 15.0) 5 - 15	95.0 <sup>a</sup>	0.002*
<b>Chest examination</b>					b	0.003*
Bilateral chest crepitation	N (%)	3(6.0%)	0 (0.0%)	3 (37.5%)		
Diminished air entry	N (%)	1(2.0%)	1 (2.4%)	0 (0.0%)		
Normal	N (%)	46(92.0%)	41 (97.6%)	5 (62.5%)		
<b>Cardiac examination</b>					b	0.169
Bradycardia	N (%)	1 (2.0%)	0 (0.0%)	1 (12.5%)		
Normal	N (%)	28 (56.0%)	24 (57.1%)	4 (50.0%)		
Tachycardia	N (%)	21 (42.0%)	18 (42.9%)	3 (37.5%)		
Pulse	Median (IQR) Range	98 (84.75-110) 55-150	98.0 (86.5 –110.0) 77 - 150	88.0 (73.5 – 125.5) 55 - 135	141.5 <sup>a</sup>	0.483
SBP	Median (IQR) Range	120 (110 -130) 60 – 160	120.0 (110.0-130.0) 100 - 160	105.0 (85.0 – 117.5) 60 – 130	80.0 <sup>a</sup>	0.017*
DBP	Median (IQR) Range	70 (70 – 80) 30 – 90	70.0 (70.0 – 80.0) 60 – 90	65.0 (52.5 – 77.5) 30 – 80	87.0 <sup>a</sup>	0.024*
RR	Median (IQR) Range	20 (18 – 22) 12 – 55	20.0 (18.0 – 22.0) 12 - 36	18.0 (18.0 – 30.75) 12 – 55	129.0 <sup>a</sup>	0.295
pH	Median (IQR) Range	7.425 (7.39 – 7.45) 7.12 – 7.58	7.425 (7.39 – 7.45) 7.12 – 7.55	7.43 (7.34 – 7.48) 7.23 – 7.58	a 6167.5	0.989
PCO <sub>2</sub>	Median (IQR) Range	30.5(25.0-37.25) 17.8-50	31.0 (25.0 – 38.25) 17.8 - 50	30.0 (26.7 – 35.25) 23.3 - 42	a 165.5	0.947
HCO <sub>3</sub>	Median (IQR) Range	20.5(17.15-24.0) 8.6-29	21.0 (17.15 – 24.0) 8.6 - 29	18.3 (16.75 – 25.08) 15.1 - 29	a 158.0	0.791
PO <sub>2</sub>	Median (IQR) Range	88 (80 – 95) 27 - 100	88.0 (81.0 – 95.5) 67 - 100	81.0 (62.5 – 88.0) 51 - 100	a 103.5	0.087
WBCs	Median (IQR) Range	9900 (7975 – 13400) 4800 – 21900	9900 (8000 – 13075) 4900 - 21900	10200 (5550 – 14275) 4800 - 18400	a 159.0	0.812
COHb level	Median (IQR) Range	25 (21.75-33.25) 15 - 65	23 (21 – 29.5) 15 - 52	44 (38.25 – 55.5) 29 - 65	a 25	<0.001*
NLR	Median (IQR) Range	4.1(3.275-4.83) 2-7	3.85 (3.2 – 4.7) 2 - 6	5.45 (4.8 – 6.83) 4.7 - 7	a 32.5	<0.001*
Lactate	Median (IQR) Range	32 – 25.5(27.5) 20 – 50.7	27 (25.38 – 31) 20 – 50.1	37.5 (31.05 – 47.25) 29 – 50.7	a 39.0	<0.001*
sTWEAK	Median (IQR) Range	174.35 (147.75-213.25) 57.25 - 2400	174.35 (131.7–213.25) 57.25 - 2400	172.0 (152.63-331.75) 147 - 501	a 154.0	0.711

DNS: delayed neurological sequelae; N: number; SBP: systolic blood pressure; DBP: diastolic blood pressure; RR: respiratory rate; IQR: interquartile range; PCO<sub>2</sub>: partial pressure of carbon dioxide; PO<sub>2</sub>: partial pressure of oxygen; HCO<sub>3</sub>: bicarbonate level; WBCs: white blood cells; COHb level: carboxyhemoglobin level; \*: significant at  $p < 0.05$ ; NLR: Neutrophil/Lymphocyte Ratio; sTWEAK: soluble tumor necrosis factor-related weak inducer of apoptosis; a: Mann Whitney U test; b: Monte Carlo Exact test

**Table 3:** ROC curve for prediction of DNS after acute CO-poisoned cases (N=50)

	AUC	Cut off	p	Sensitivity	Specificity	PPV	NPV	Accuracy
COHb level	0.926	>36	<0.001*	87.5%	90.5%	63.6%	97.4%	90%
Delay time	0.857	>2.75	0.001*	87.5%	83.3%	50%	97.2%	84%
Duration of exposure	0.737	>37.75	0.035*	62.5%	69.0%	27.8%	90.6%	68%
DBP	0.741	<65.0	0.032*	90.5%	50%	90.5%	50%	84%
SBP	0.762	<105.0	0.020*	90.5%	50%	90.5%	50%	84%
GCS	0.717	<11.5	0.053	95.2%	50%	90.9%	66.7%	88%
NLR	0.903	>4.75	<0.001*	87.5%	78.6%	43.8%	97.1%	80%
Lactate	0.884	>30.2	<0.001*	87.5%	73.8%	38.9%	96.9%	76%

SBP: systolic blood pressure; DBP: diastolic blood pressure; GCS: Glasgow Coma Scale; NLR: neutrophil/lymphocyte ratio; AUC: Area Under a Curve; NPV: Negative predictive value; PPV: Positive predictive value. \*: significant at  $p < 0.05$

**Discussion**

Acute CO poisoning survivors could develop DNS referring to neuropsychiatric symptoms recurrence following a lucid interval of apparent recovery ranging between 2 and 40 days after acute exposure to CO. Numerous DNS clinical presentation might occur, involving headache, amnesia, cognitive dysfunction, mood disorders, movement disorders,

parkinsonism, dysarthria, incontinence, personality changes, as well as profound disabling hypoxic brain injury consequences. Thus, it becomes challenging for physicians to detect CO-poisoned cases possessing high chances of developing DNS. Additionally, it could be useful for them when there are clinical criteria or laboratory tests that could predict DNS occurrence (Cha *et al.* 2018) [3].

This study aimed to evaluate sTWEAK protein, NLR, blood lactate, and COHb levels as DNS predictors following acute CO poisoning.

The study's findings revealed that 16% of patients developed DNS which agreed with Hafez and El-Sarnagawy (2020). DNS in the present study were in the form of chronic headache, memory disturbance, dizziness, gait disturbance, slurred speech, diminished hearing, and vegetative state. This agreed with Gaballah *et al.* (2020) [6] who found that DNS after CO poisoning were chronic headache, memory impairment, gait abnormalities, and tremors. Moreover, Seale *et al.* (2018) [27] reported hearing loss following CO poisoning which could be attributed to damage of the cochlea, vestibular nerve, and central auditory pathways. Also, Liu *et al.* (2020) [24] recorded the development of a vegetative state following CO poisoning. The current study revealed no significant variations among both DNS as well as non-DNS groups as regards age and sex which coincided with Han *et al.* (2021) [12]. Additionally, no significant variation was documented among both groups as regards CO exposure source which agreed with Abdel Salam *et al.* (2021) [1].

Additionally, the study's findings revealed a longer CO exposure period among the DNS group as opposed to the non-DNS one which supported Gaballah *et al.* (2020) [6] and Han *et al.* (2021) [12]. In addition, Huang *et al.* (2019) [15] addressed, the brain possesses high sensitivity to hypoxia as a result of its high metabolic rate; therefore, a longer duration of exposure to CO would allow more oxygen deprivation to the brain and more development of DNS. Moreover, the pre-hospitalization period was longer within DNS group as opposed to the non-DNS one which supported Abdel Salam *et al.* (2021) [1].

The present study reported that neurological manifestations such as loss of consciousness were significantly greater within the DNS group as opposed to the non-DNS which supported Hassan *et al.* (2018) [14], Lin *et al.* (2018) [23], and Jung *et al.* (2023) [17]. It might be due to more brain hypoxia in patients with neurological symptoms than others. Furthermore, no significant variations were documented among both groups as regards GIT or chest symptoms such as dyspnea which supported Hassan *et al.* (2018) [14]. Moreover, DNS group exhibited a significantly lower GCS at hospital admission as opposed to the non-DNS one, thus supporting Pan *et al.* (2019) [25] as well as Shahin *et al.* (2020) [28]. Several mechanisms such as hypoxic as well as inflammatory responses induced by CO could result in neuronal damage. This may suggest that patients with altered mental status within acute CO poisoning phase may develop DNS more within the subacute or chronic phases as shown by Cha *et al.* (2018) [3].

The current study addressed chest crepitations presence or diminished air entry was significantly greater within the DNS group as opposed to the non-DNS one as these findings could exacerbate hypoxemia that may increase the DNS occurrence. Moreover, Cha *et al.* (2018) [3] addressed, CO-poisoned patients presented with aspiration pneumonia and coma could develop DNS more than others. Additionally, the present study detected a significant hypotension within DNS group on hospital admission as opposed to the non-DNS one which supported Ghanem *et al.* (2022) [9]. Furthermore, pulse and respiratory rate didn't show significant differences among the DNS as well as non-DNS group in this study which agreed with Han *et al.*

(2021) [12].

The current study didn't reveal a significant variation among both groups as regards the results of ABG. Pan *et al.* (2019) [25] found in their study that pH and PO<sub>2</sub> didn't show a significant association with the development of DNS. However, they found that HCO<sub>3</sub> and PCO<sub>2</sub> were significantly lower among those developing DNS as opposed to others.

Regarding the studied markers, a significant NLR rise of DNS group compared to non-DNS one which supported Gao *et al.* (2021) [7] as well as Ghanem *et al.* (2022) [9]. NLR was proved to be a powerful, simple, cheap, as well as largely available marker for systemic inflammation. Additionally, Karabacak *et al.* (2015) [18] suggested, systemic inflammation could have a role in acute CO poisoning-related complications; therefore, a high NLR may be an indicator of worsening complications in CO poisoning. They also suggested that the use of systemic anti-inflammatory medications may be useful in acute CO poisoning.

Furthermore, the current study revealed a significant hyperlactatemia within DNS group compared to the non-DNS one which supported Kim *et al.* (2018) [19] as well as Lee *et al.* (2022) [21]. This could be due to the systemic hypoxia induced by CO poisoning leading to anaerobic glycolysis associated with a possible increase in blood lactate level. Moreover, COHb level was significantly greater within the DNS group as opposed to non-DNS one which supported Hassan *et al.* (2018) [14] as well as Pan *et al.* (2019) [25]. In contrast, Zhang *et al.* (2021) [33] and Chi *et al.* (2022) [4] didn't find a significant association between elevated COHb level and DNS in CO-poisoned patients. This may be due to several factors that could affect COHb level involving CO exposure duration, pre-hospitalization period, and time of withdrawing COHb blood sample. Concerning sTWEAK level, the median of sTWEAK within acute CO-poisoned cases of our research was 174 pg/ml which was higher than the median of sTWEAK level in healthy subjects (75 pg/ml). However, the level sTWEAK didn't show a significant variation among both groups. Supporting Dindar Badem *et al.* (2019) [5] addressing a statistically significant variation ( $p < 0.001$ ) between sTWEAK level among those poisoned with CO as well as the control group indicating that apoptosis may occur in CO toxicity and they suggested that sTWEAK level could be used as a diagnostic marker for acute CO poisoning, but they couldn't find an association between sTWEAK level and prognosis of CO poisoning.

The ROC curve in the current study showed that NLR and COHb level were excellent predictors for DNS, blood lactate level and delay time were good predictors for DNS, while duration of exposure to CO, systolic, and diastolic blood pressure were DNS fair predictors among acute CO poisoned cases. Likewise, Ghanem *et al.* (2022) [9] reported that NLR and COHb level were excellent predictors for DNS. They also performed univariate regression analysis to identify factors affecting DNS occurrence among CO poisoned cases. Additionally, they addressed duration of exposure to CO, pre-hospitalization period, GCS, blood pressure, and NLR were significant DNS predictors.

## Conclusion

Delayed neurological sequelae were reported in 16% of patients in this study after CO poisoning. Chronic headache

was the most common DNS, followed by memory impairment.

The studied markers (COHb, NLR and lactate) might be beneficial biomarkers while predicting DNS following acute CO poisoning. In contrast, sTWEAK level didn't show a significant association with the development of DNS.

### Limitations and recommendations

A small sample size might not confirm whether sTWEAK level could be a prognostic marker for CO poisoning or not. Therefore, multicenter studies with larger sample sizes are recommended. Routine measurement of blood lactate level and NLR in acute CO-poisoned patients could be useful in predicting DNS. Patients with hyperlactatemia and elevated NLR on admission should undergo meticulous follow-up after discharge for early detection of DNS and rapid initiation of appropriate treatment.

### Statements & Declarations

Ethics approval and consent to take part in the research: our research was conducted following the approval of the Medical Research Ethics Committee of the Faculty of Medicine, Tanta University (Approval code was 34038/8/20). All participants or their guardians were asked to fill in an informed consent before starting the research. Data confidentiality was protected by creating a unique code number for every participant.

### Funding

The authors declare that they did not receive any financial assistance, grants, or other forms of support while preparing this manuscript.

**Competing Interests:** The authors do not have any relevant financial or non-financial interests to declare.

**Author contribution:** Marwa Mubarak collected and analyzed the patients' data and drafted the manuscript. Doaa El-Gharbawy, Ayman Wageeh, and Aisha Maklad were major contributors in all the steps of research including writing and revising the manuscript. All authors read and approved the final manuscript.

### Consent for publication

Not applicable.

### Conflict of interest

There are no conflicts of interest to declare

### References

1. Abd El Salam ME, Elawady EH, Khater AS, Eweda SA, Abdel Moneam MH. Neuropsychiatric sequelae of acute carbon monoxide poisoning: The predictive role of neuron specific enolase and glial fibrillary acidic protein. *Neurotoxicol.* 2021;85(1):115-120. <https://doi.org/10.1016/j.neuro.2021.05.003>
2. Brunner M, Kolb K, Keitel A, Stiefel F, Wucherpfennig T, Bechmann J, *et al.* Application of metabolic modeling for targeted optimization of high seeding density processes. *Biotechnol Bioeng.* 2021;118(5):1793-1804. <https://doi.org/10.1002/bit.27693>
3. Cha Y, Kim H, Do H, Kim H, Kim O, Cha K, *et al.* Serum neuron-specific enolase as an early predictor of delayed neuropsychiatric sequelae in patients with acute carbon monoxide poisoning. *Hum Exp Toxicol.* 2018;37(3):240-246. <https://doi.org/10.1177/0960327117698544>
4. Chi YJ, Pan HY, Cheng FJ, Chang YI, Chuang PC. Experience of carbon monoxide poisoning and the outcome predicting score: A multicenter retrospective study. *Am J Emerg Med.* 2022;58:73-78. <https://doi.org/10.1016/j.ajem.2022.05.012>
5. Dindar Badem N, Comertpay E, Coskun F. How much apoptosis does carbon monoxide poisoning cause? Primary clinical soluble TWEAK protein level study. *Hum Exp Toxicol.* 2019;38(8):974-982. <https://doi.org/10.1177/0960327119845038>
6. Gaballah S, Elkhishen I, Hashim N, Abdel Hamid O. Predictors of delayed neurological sequelae after acute carbon monoxide poisoning at Zagazig University Hospitals. *Zagazig J Forensic Med Toxicol.* 2020;18(2):105-121. <https://dx.doi.org/10.21608/zjfm.2020.41674.1063>
7. Gao H, Sun L, Wu H, Chen J, Cheng Y, Zhang Y. The predictive value of neutrophil-lymphocyte ratio at presentation for delayed neurological sequelae in carbon monoxide poisoning. *Inhal Toxicol.* 2021;33(4):121-127. <https://doi.org/10.1080/08958378.2021.1887410>
8. Ghanem A, Rahman R, Shabka O. Stability of carboxyhaemoglobin in blood samples at different periods and temperatures: a forensic and toxicological tool for diagnosis. *J Clin Toxicol.* 2012;2(8):1-4. <https://doi.org/10.4172/2161-0495.1000144>
9. Ghanem MA, El Shanawany S, Ashry M, Abdelgaleel A, Gad NH, Kholeif W. Neutrophil-lymphocyte ratio and ischemia-modified albumin in predicting carbon monoxide-delayed neurological sequelae. *Asia Pac J Med Toxicol.* 2022;11(3):112-120. <https://doi.org/10.22038/apjmt.2022.21084>
10. Gozubuyuk AA, Dag H, Kacar A. Epidemiology, pathophysiology, clinical evaluation, and treatment of carbon monoxide poisoning in child, infant, and fetus. *North Clin Istanb.* 2017;4(1):100-107. <https://doi.org/10.14744/nci.2017.49368>
11. Hafez AS, El-Sarnagawy GN. S-100 $\beta$  in predicting the need of hyperbaric oxygen in CO-induced delayed neurological sequels. *Hum Exp Toxicol.* 2020;39(5):614-623. <https://doi.org/10.1177/0960327119897104>
12. Han S, Choi S, Nah S, Lee SU, Cho YS, Kim GW, *et al.* Cox regression model of prognostic factors for delayed neuropsychiatric sequelae in patients with acute carbon monoxide poisoning: A prospective observational study. *Neurotoxicology.* 2021;82:63-68. <https://doi.org/10.1016/j.neuro.2020.11.006>
13. Hanley ME, Patel PH. Carbon Monoxide Toxicity. [Updated 2023 Jan 23]. In: StatPearls [Internet]. Treasure Island (FL): StatPearls Publishing; 2023. Available from: <https://www.ncbi.nlm.nih.gov/books/NBK430740/>
14. Hassan O, Abdelaleem S, Hamdy L. A prospective comparative study between three chemical markers for predicting delayed neurological sequelae in patients with acute carbon monoxide poisoning of poison control center in Minia University Hospital. *Ain Shams*



- J Forensic Med Clin Toxicol. 2018;31(2):23-32. <https://doi.org/10.21608/ajfm.2018.15874>
15. Huang CC, Lee JC, Lin KC, Lin HJ, Su SB, Hsu CC, *et al.* Exposure duration and history of hypertension predicted neurological sequelae in patients with carbon monoxide poisoning. *J Epidemiol.* 2019;30(1):76-81. <https://doi.org/10.1097/ede.0000000000001000>
  16. Jung J, Lee J. Serum lactate as a predictor of neurologic outcome in ED patients with acute carbon monoxide poisoning. *Am J Emerg Med.* 2019;37(5):823-827. <https://doi.org/10.1016/j.ajem.2018.07.046>
  17. Jung MH, Lee J, Oh J, Ko BS, Lim TH, Kang H, *et al.* Effectiveness of initial troponin I and brain natriuretic peptide levels as biomarkers for predicting delayed neuropsychiatric sequelae in patients with CO poisoning: A retrospective multicenter observational study. *J Pers Med.* 2023;13(6):921-933. <https://doi.org/10.3390/jpm13060921>
  18. Karabacak M, Turkdogan KA, Coskun A, Akpinar O, Duman A, Kapci M, *et al.* Detection of neutrophil-lymphocyte ratio as a serum marker associated with inflammation by acute carbon monoxide poisoning. *J Acute Dis.* 2015;4(4):305-308. <https://doi.org/10.1016/j.joad.2015.06.009>
  19. Kim M, Choi S, Park E. Serum markers and development of delayed neuropsychological sequelae after acute carbon monoxide poisoning: anion gap, lactate, osmolarity, S100B protein, and interleukin-6. *Clin Exp Emerg Med.* 2018;5(3):185-191. <https://doi.org/10.15441/ceem.17.217>
  20. Kokulu K, Mutlu H, Sert ET. Serum netrin-1 levels at presentation and delayed neurological sequelae in unintentional carbon monoxide poisoning. *Clin Toxicol.* 2020;58(12):1313-1319. <https://doi.org/10.1080/15563650.2020.1743302>
  21. Lee H, Oh J, Kang H, Ahn C, Nangung M, Kim CW, *et al.* Association between early phase serum lactate levels and occurrence of delayed neuropsychiatric sequelae in adult patients with acute carbon monoxide poisoning: A systematic review and meta-analysis. *J Pers Med.* 2022;12(4):651-667. <https://doi.org/10.3390/jpm12040651>
  22. Liao SC, Mao YC, Hung YM, Lee CH, Yang CC. Predictive role of QTC prolongation in carbon monoxide poisoning-related delayed neuropsychiatric sequelae. *Biomed Res Int.* 2018;2018:2543018. <https://doi.org/10.1155/2018/2543018>
  23. Lin MS, Lin CC, Yang CC, Weng SC, Wang SM, Chen CY, *et al.* Myocardial injury was associated with neurological sequelae of acute carbon monoxide poisoning in Taiwan. *J Chin Med Assoc.* 2018;81(8):682-690. <https://doi.org/10.1016/j.jcma.2017.12.006>
  24. Liu J, Si Z, Liu J, Lin Y, Yuan J, Xu S, *et al.* Clinical and imaging prognosis in patients with delayed encephalopathy after acute carbon monoxide poisoning. *Behav Neurol.* 2020;2020:1719360. <https://doi.org/10.1155/2020/1719360>
  25. Pan KT, Shen CH, Lin FG, Chou YC, Croxford B, Leonardi G, *et al.* Prognostic factors of carbon monoxide poisoning in Taiwan: a retrospective observational study. *BMJ Open.* 2019;9(11):e031135. <http://dx.doi.org/10.1136/bmjopen-2019-031135>
  26. Patki VK, Antin JV, Khare SH. Persistent hyperlactatemia as the predictor of poor outcome in critically ill children: A single-center, prospective, observational cohort study. *J Pediatr Intensive Care.* 2017;6(3):152-158. <https://doi.org/10.1055/s-0036-1593886>
  27. Seale B, Ahanger S, Hari C. Subacute carbon monoxide poisoning presenting as vertigo and fluctuating low frequency hearing loss. *J Surg Case Rep.* 2018;2018(8):1-3. <https://doi.org/10.1093/jscr/rjy205>
  28. Shahin M, Allam A, Elkholy R, Lashin H. Hematological parameters as early predictors of delayed neurological sequelae in acute carbon monoxide poisoning. *Ain Shams J Forensic Med Clin Toxicol.* 2020;35(2):61-72. <https://doi.org/10.21608/ajfm.2020.104446>
  29. Shanghai Korain Biotech Co. Human tumour necrosis factor related weak inducer of apoptosis (TWEAK) ELISA Kit, Cat.No : E1820Hu. 2021. <https://www.2bscientific.com/Products/BT-LABS/E1820Hu/Human-Tumour-necrosis-factor-related-weak-inducer-of-apoptosisTWEAK-ELISA-KIT>
  30. Sikary AK, Dixit S, Murty OP. Fatal carbon monoxide poisoning: A lesson from a retrospective study at All India Institute of Medical Sciences, New Delhi. *J Family Med Prim Care.* 2017;6(4):791-794. [https://doi.org/10.4103/jfmpc.jfmpc\\_408\\_16](https://doi.org/10.4103/jfmpc.jfmpc_408_16)
  31. Velasquez C, Patchana T, McParland B, Lovy J, Maarouf A, Whitty C. Carbon monoxide poisoning: The great imitator. *Spartan Med Res J.* 2017;2(1):6343. <https://doi.org/10.51894/001c.6343>
  32. Zahorec R. Neutrophil-to-lymphocyte ratio, past, present and future perspectives. *Bratisl Lek Listy.* 2021;122(7):474-488. [https://doi.org/10.4149/bl\\_2021\\_078](https://doi.org/10.4149/bl_2021_078)
  33. Zhang Y, Lu Q, Jia J, Xiang D, Xi Y. Multicenter retrospective analysis of the risk factors for delayed neurological sequelae after acute carbon monoxide poisoning. *Am J Emerg Med.* 2021;46:165-169. <https://doi.org/10.1016/j.ajem.2020.06.090>.

**How to Cite This Article**

Mubarak MA, El-Gharbawy DM, Wagih AAFF, Maklad AI. Assessment of sTWEAK protein, neutrophil-lymphocyte ratio, blood lactate and carboxyhemoglobin as predictors of delayed neurological sequelae after acute carbon monoxide poisoning. *International Journal of Forensic Medicine* 2024; 6(1): 01-09

**Creative Commons (CC) License**

This is an open access journal, and articles are distributed under the terms of the Creative Commons Attribution-NonCommercial-ShareAlike 4.0 International (CC BY-NC-SA 4.0) License, which allows others to remix, tweak, and build upon the work non-commercially, as long as appropriate credit is given and the new creations are licensed under the identical terms.